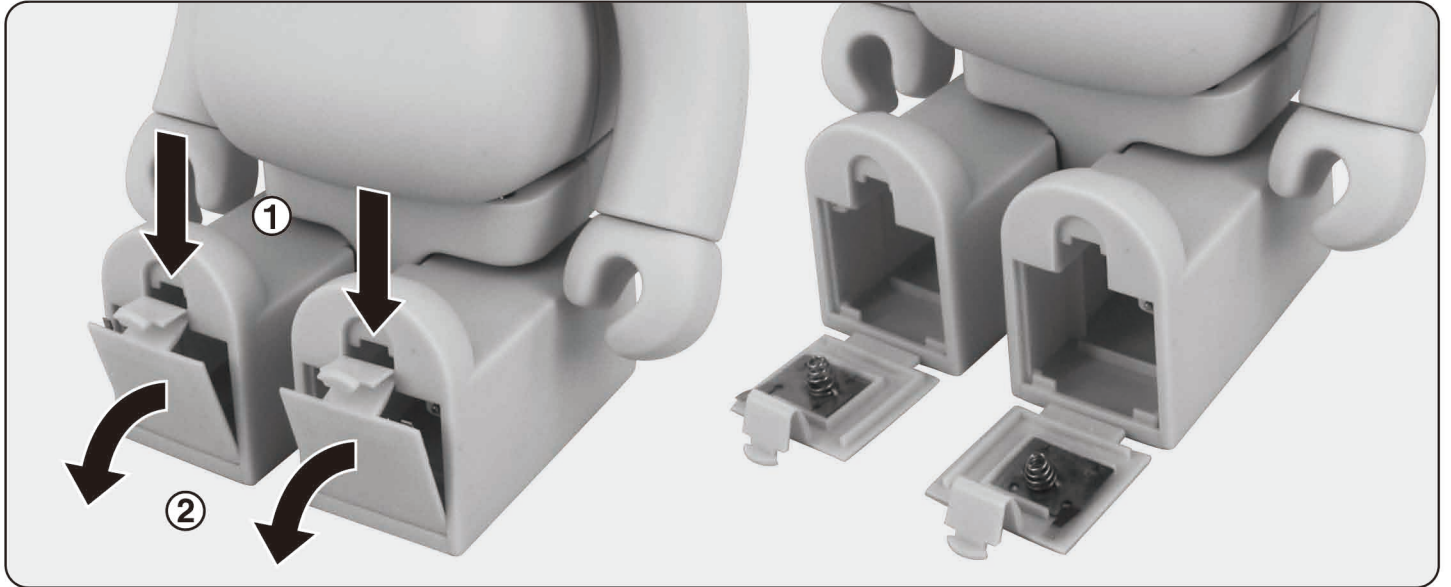
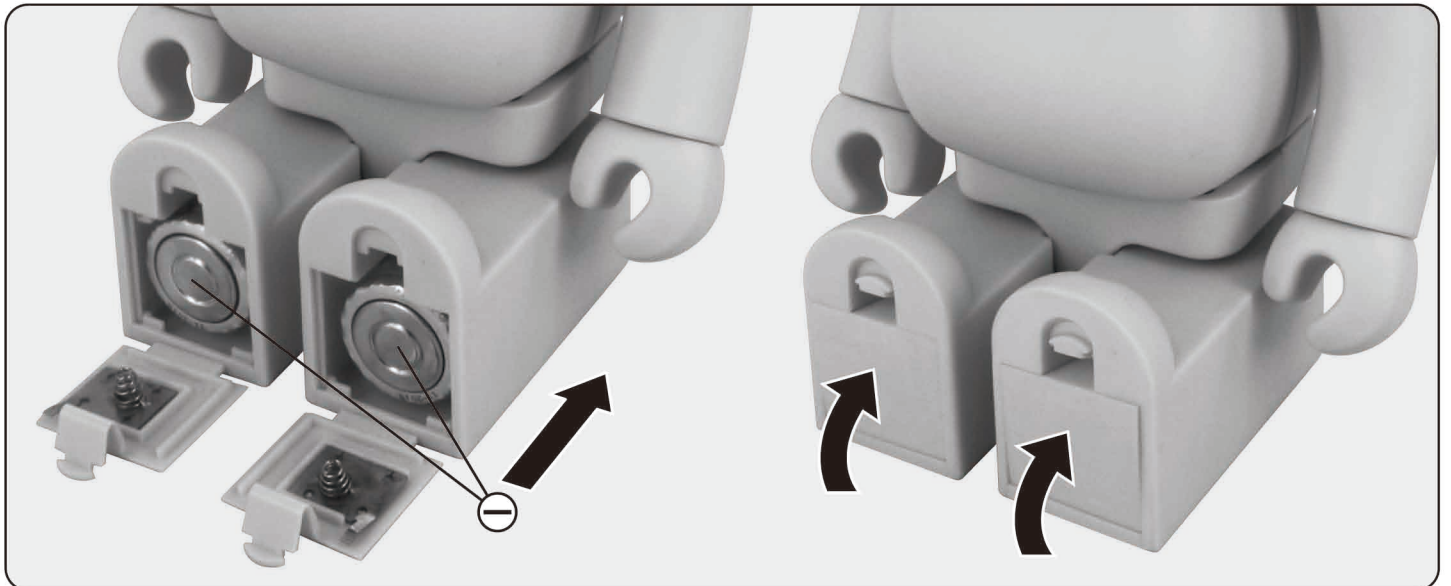


電池の取り付け・交換方法 / How to replace batteries

足裏の電池蓋のつま先側のツメを引き下げて、電池蓋を外します。

Please take off the battery cover by pressing down the tab on the battery cover on the bottom of the foot.



蓋側がマイナスになるようにそれぞれの足に単2電池を入れます。(電池をプラス、マイナス入れ間違えないようにご注意ください。) 電池蓋を閉じます。

Please place 2 pcs of C battery and have the minus side of the battery facing towards the battery cover. (Please make sure you have the plus and minus side inserted correctly) Please close the battery cover.